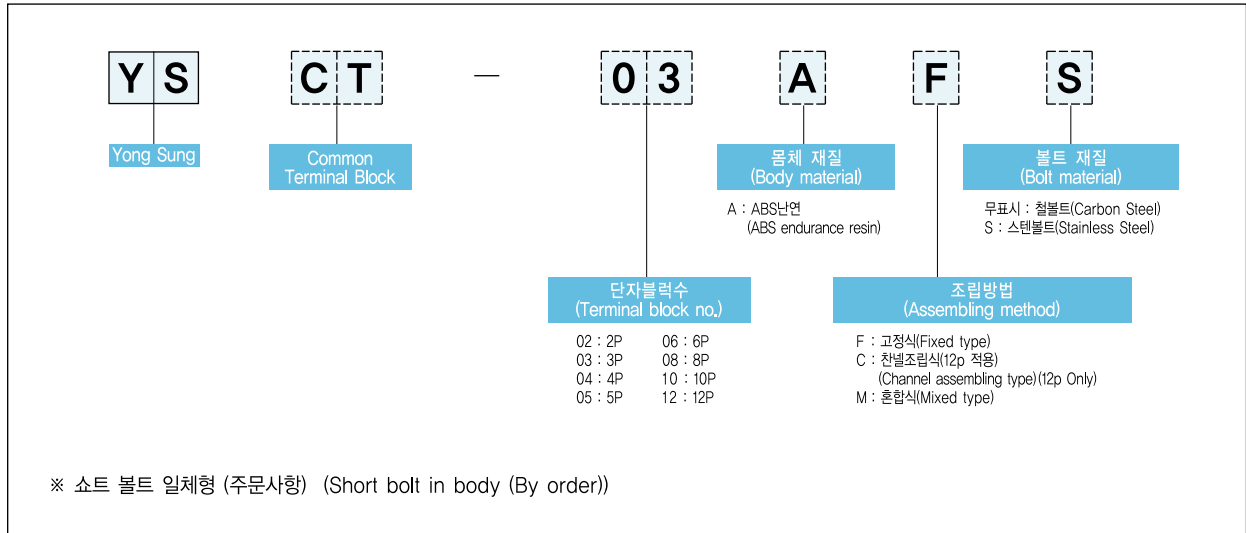


## 11-2

### 단락회로부 단자대 Common Terminal Block

#### 형식 구분도 | Type Classification Diagram |



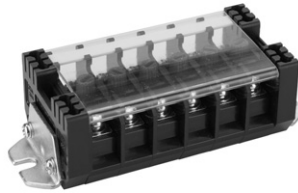
#### 특징 | Features |

- YS CT 단자대는 Short bolt사용에 의하여 CT회로의 단락을 자유로이 행할 수 있으며 Short bolt를 사용하지 않을 때에는 양쪽의 Side block에 보관할 수 있도록 편리한 구조로 되어있습니다.
- 조립식으로 되어 있기 때문에 필요한 회로수에 따라 Unit block을 증감할 수 있어 경제적입니다.
- 고정식과 채널 조립식으로 구성되어 있습니다.
- YS CT terminal block compose short circuit of CT circuit freely by using short bolt and is of convenient structure which can keep short bolt in both side blocks when not using.
- Due to assembling type, it is economical as unit block can be increased/decreased acc. to circuit number required.
- Consist of fixed type and channel assembling type.

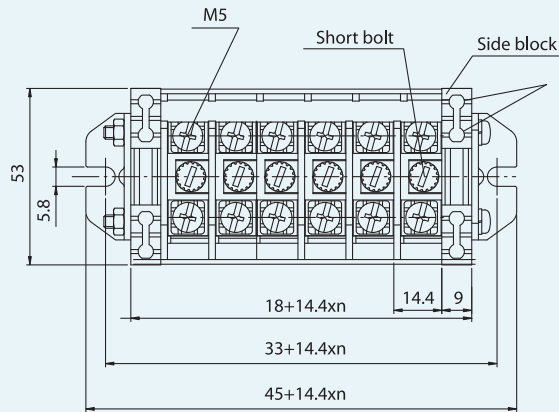
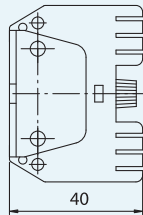
#### 성능 개요 | Performance Summary |

정격절연전압 (Rated insulation voltage)	600V Max.
적용적합전선 (Suitable wire)	2.5 ~ 6mm <sup>2</sup> (14 ~ 10AWG)
정격전류 (Rated current)	30A
절연저항 (Insulation resistance)	100MΩ 이상 (Above 100MΩ) (DC 500V, Meg)
내전압 (Withstand voltage)	AC 2,500V/min
사용주위온도 (Ambient temperature)	-20°C ~ +55°C
상대습도 (Relative humidity)	45 ~ 85%

Common Terminal (Fixed Type, Mixed Type)



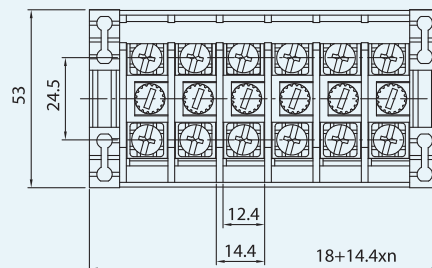
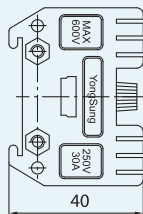
Fixed Type



분실 위험을 막기  
위한 Short bolt  
보관장소  
(Short bolt  
storage space  
to prevent  
loss possibility)

(n=UNIT BLOCK NO.)

Mixed Type



(n=UNIT BLOCK NO.)

Common Terminal (Channel Assembling Type)

