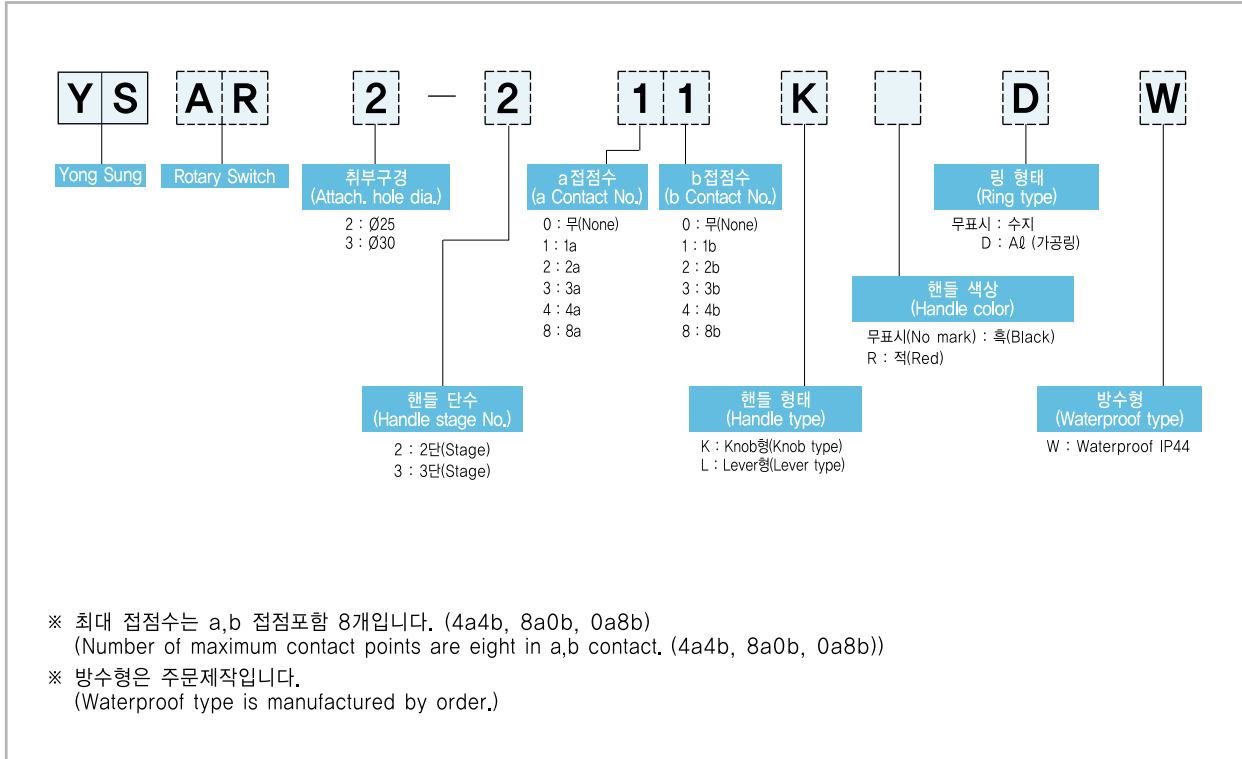


## 제어용 스위치류

## 7-2

로타리 스위치 (A형)  
Rotary Switch (A Type)

## 형식 구분도 | Type Classification Diagram |



## 특징 | Features |

- 금속부분을 특수합금처리 또는 도금처리하였기 때문에 수명이 매우 깁니다.
- 판넬부착 Ring은 보통 내열성 ABS로 되어 있으나 주문시에는 다이캐스팅 알루미늄으로 대체할 수 있습니다.
- Special alloying or plating treatment on metal parts makes longer life.
- Normal panel attachment ring is heat resistance ABS, but also replaceable by diecasting aluminum upon request.

## 성능 개요 | Performance Summary |

절연저항 (Insulation resistance)	Above 100MΩ (DC 500V. Meg)
접촉저항 (Contact resistance)	Below 50mΩ (Initial value)
내전압 (Withstand voltage)	AC 2,500V/min
기계적수명 (Mechanical lifetime)	Above 500,000 times (20 times/min)
전기적수명 (Electrical lifetime)	Above 100,000 times (20 times/min)
사용주위온도 (Ambient temperature)	-20°C ~ +55°C
상대습도 (Relative humidity)	45 ~ 85%

## 접점 구성도 (기본 접점) | Contact Form Drawing (Basic Contact) |

접점구성번호 (Contact No.)	접점구성 (Contact form)	단자부호 (Terminal code)	2단(2stage)		접점구성번호 (Contact No.)	접점구성 (Contact form)	단자부호 (Terminal code)	3단(3stage)		
			Left	Right				Left	Center	Right
11	1a1b	NO		●	11	1a1b	NO	●		
		NC	●				NC		●	
20	2a	NO		●	20	2a	NO	●		
		NO		●			NO	●		
22	2a2b	NO		●	22	2a2b	NO	●		
		NC	●				NC		●	
		NO		●			NO	●		
		NC	●				NC		●	
40	4a	NO		●	40	4a	NO	●		
		NO		●			NO	●		
		NO		●			NO	●		
		NO		●			NO	●		

## 핸들 동작 방향도 | Directional Diagram of Handle Action |

2단 (2 stage)	3단 (3 stage)

제어용  
스위치

## 핸들 종류 | Handle Type |

Knob Type	Lever Type

# 제어용 스위치류

## 부품 재질 | Part Materials |

부품 (Part)	재질 (Materials)
하부 (Contact block)	PC 수지 (Polycarbonate resin)
홀더 (Holder)	ABS 내열 수지 (Heat resistance ABS resin)
접점 (Contact)	은접점 (Silver contact)
단자 (Terminal)	황동 (Brass)
볼트 (Bolt)	탄소강 (Carbon steel, stainless steel)
핸들 (Handle)	ABS 수지 (ABS resin)
스프링 (Spring)	스테인레스 (Stainless steel)
링 (Ring)	ABS 수지, 알루미늄 (ABS resin, Al)

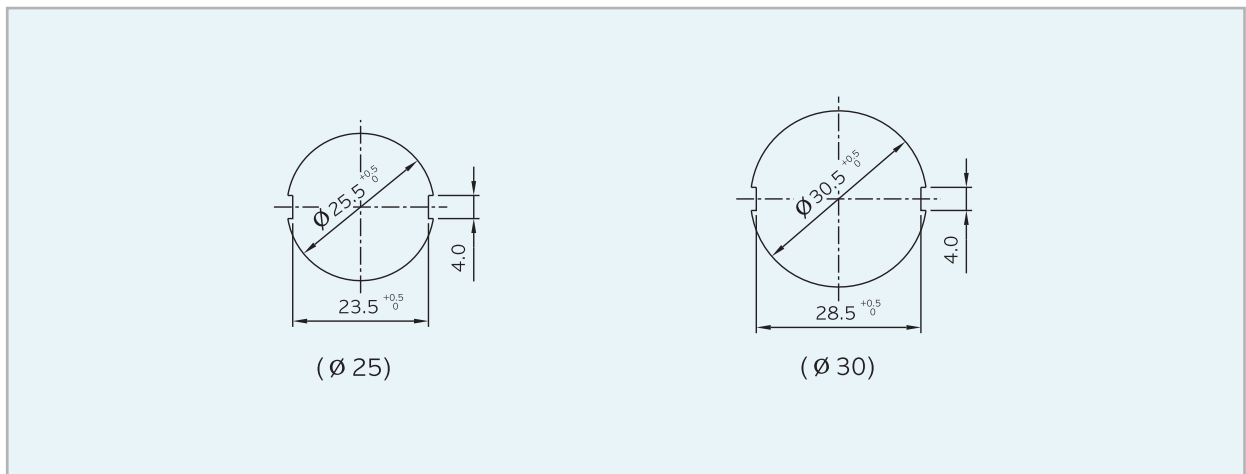
## 접점 정격 | Contact Rated |

정격절연전압 (Rated insulation voltage)		AC600V, DC250V		
정격통전전류 (Rated conductive current)		10A		
AC	정격사용전압 (Rated voltage)	110V	220V	440V
	저항부하 (Resistive load)	10A	6A	3A
	유도부하 (Inductive load)	5A	2.5A	1.2A
DC	정격사용전압 (Rated voltage)	110V	125V	220V
	저항부하 (Resistive load)	2.2A	1.9A	1.1A
	유도부하 (Inductive load)	1.1A	1.0A	0.6A

제어용  
스위치

## 판넬 가공 치수 | Cut-out Dimension |

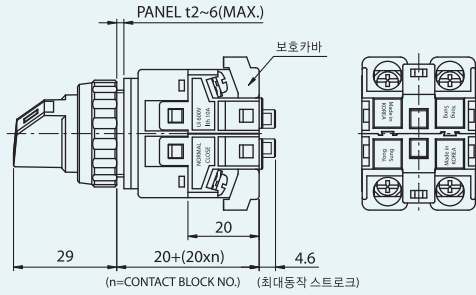
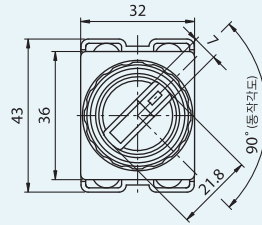
(unit : mm)



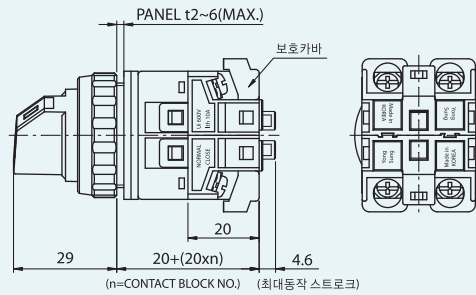
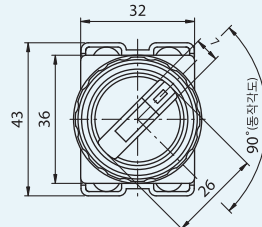
## 외형 / 치수도 | Shape / Dimension Drawing

(unit: mm)

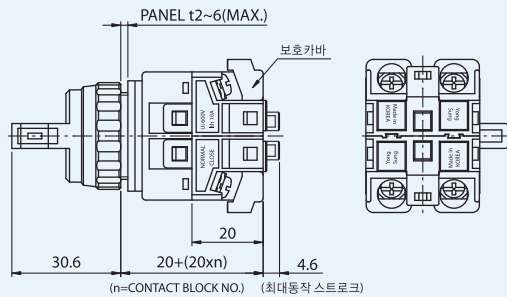
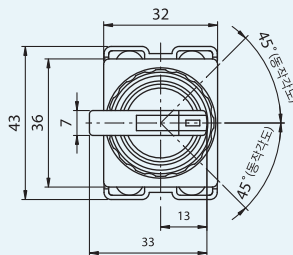
### Knob Type (Ø25)



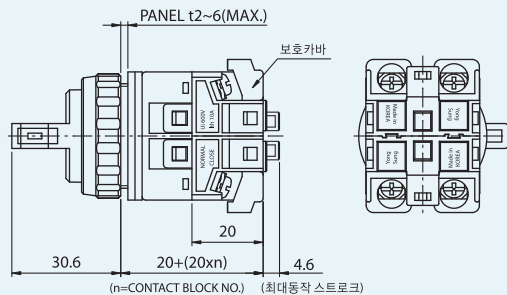
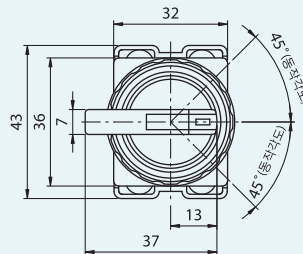
### Knob Type (Ø30)



### Lever Type (Ø25)



### Lever Type (Ø30)



제어용  
스위치