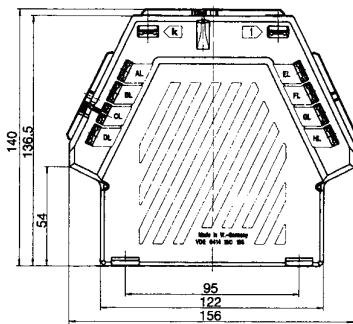
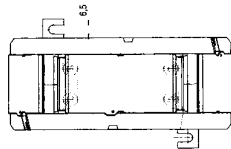
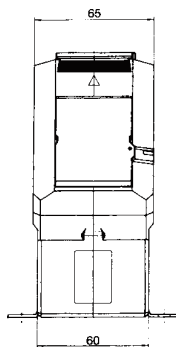


SUSK 3...8

Summation current transformer



Type	Secondary current		5A		1A	
	Primary current A	Burden VA	Accuracy class		Accuracy class	
			1	0.5	1	0.5
			Art.-no.	Art.-no.	Art.-no.	Art.-no.
3	5+5+5	5	40015	40011	40215	40211
		10	40016	40012	40216	40212
		15	40017	40014	40217	40214
		30	40018		40218	
4	5+5+5+5	5	40026	40023	40226	40223
		10	40027	40024	40227	40224
		15	40028	40025	40228	40225
		25	40029		40229	
		30	40030		40230	
5	5+5+5+5+5	5	40037	40034	40237	40234
		10	40038	40035	40238	40235
		15	40039	40036	40239	40236
		30	40040		40240	
6	5+5+5+5+5+5	5	40048	40045	40248	40245
		10	40049	40046	40249	40246
		15	40050	40047	40250	40247
		30	40051		40251	
7	5+5+5+5+5+5+5	5	40060	40057	40260	40257
		10	40061	40058	40261	40258
		15	40062	40059	40262	40259
		30	40063		40263	
8	5+5+5+5+5+5+5+5	5	40071	40068	40271	40268
		10	40072	40069	40272	40269
		15	40073	40070	40273	40270
		30	40074		40274	

Primary current 1 A, see page 116

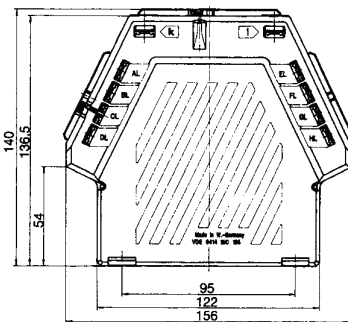
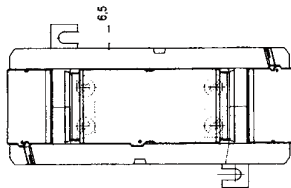
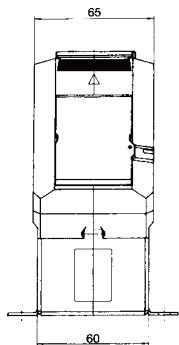
Connection diagram

Primary conductor	—
Round conductor	—
Transformer width	156 mm
Transformer depth	65 mm
Snap-on mounting	—
Sealed shutter secondary no.	Art.-no. 59041 (primary) Art.-no. 59042 (secondary) see page 205
Current transformer for tariff applications	see page 195



SUSK 3...8

Summation current transformer



Typ	Secondary current		5A		1A	
	Primary current A	Burden VA	Accuracy class		Accuracy class	
			1	0.5	1	0.5
			Art.-no.	Art.-no.	Art.-no.	Art.-no.
3	1+1+1	5	40115	40111	40315	40311
		10	40116	40112	40316	40312
		15	40117	40114	40317	40314
		30	40118	40318		
4	1+1+1+1	5	40126	40123	40326	40323
		10	40127	40124	40327	40324
		15	40128	40125	40328	40325
		25	40129	40329		
		30	40130	40330		
5	1+1+1+1+1	5	40137	40134	40337	40334
		10	40138	40135	40338	40335
		15	40139	40136	40339	40336
		30	40140	40340		
6	1+1+1+1+1+1	5	40148	40145	40348	40345
		10	40149	40146	40349	40346
		15	40150	40147	40350	40347
		30	40151	40351		
7	1+1+1+1+1+1+1	5	40160	40157	40360	40357
		10	40161	40158	40361	40358
		15	40162	40159	40362	40359
		30	40163	40363		
8	1+1+1+1+1+1+1+1	5	40171	40168	40371	40368
		10	40172	40169	40372	40369
		15	40173	40170	40373	40370
		30	40174	40374		

Primary current 5 A, see page 115

Connection example for different ratios :

- AK-AL = 1000/5
- BK-BL = 800/5
- CK-CL = 600/5
- DK-DL = 400/5
- EK-EL = 400/5
- FK-FL = 300/5
- GK-GL = 300/5
- HK-HL = 300/5

Primary conductor	—
Round conductor	—
Transformer width	156 mm
Transformer depth	65 mm
Snap-on mounting	—
Sealed shutter secondary no.	Art.-no. 59041 (primary) Art.-no. 59042 (secondary) see page 205
Current transformer for tariff applications	see page 195