

## 릴레이류

## 접점 정격 | Contact Rated |

정격절연전압 (U <sub>i</sub> ) (Rated insulation voltage)			AC 250V, DC 250V		
정격통전전류 (I <sub>th</sub> ) (Rated conductive current)			10A		
최대개폐전류 (Max. Switching current)			10A		
교류 (AC)	정격전압 (U <sub>e</sub> ) (Rated voltage)		24V	110V	220V
	정격전류 (I <sub>e</sub> ) (Rated current)	저항부하 (Resistive load) $\cos\phi = 1$	10A	10A	5A
		유도부하 (Inductive load) $\cos\phi = 0.4$	10A	7.5A	3.75A
	최대 개폐용량 (Max. Switching capacity)	저항부하 (Resistive load) $\cos\phi = 1$	1,100VA		
유도부하 (Inductive load) $\cos\phi = 0.4$		825VA			
직류 (DC)	정격전압 (U <sub>e</sub> ) (Rated voltage)		24V	110V	220V
	정격전류 (I <sub>e</sub> ) (Rated current)	저항부하 (Resistive load)	10A	2.2A	1.1A
		유도부하 (Inductive load) L/R = 7ms	5A	1.1A	0.54A
	최대 개폐용량 (Max. Switching capacity)	저항부하 (Resistive load)	240W		
유도부하 (Inductive load) L/R = 7ms		120W			

※ 주      개폐전류의 최대치는 10A입니다.

※ Note    Maximum switching current is 10A.

## 코일 정격 | Coil Rated |

	정격전압(V) (Rated voltage)	정격전류(mA) (Rated current)		COIL 저항(Ω) (Coil resistance)	소비전력(VA, W) (Power consumption)		동작전압(V) (Operation voltage)	복귀전압(V) (Return voltage)	최대허용전압(V) (Max. allowable voltage)
AC	24	93.6	80	78	2.25	1.92	Below 80%	Above 30%	110%
	100/110	22.5/25.5	19.0/21.8	1,800	2.25/2.81	1.90/2.40			
	200/220	12.5/14.3	11.8/13.4	6,700	2.50/3.15	2.36/2.95			
DC	24	69		350	1.66		Below 80%	Above 10%	110%
	48	30		1,600	1.44				
	110	15.9		6,900	1.75				
	125	12.0		10,400	1.50				
	220	6.9		32,000	1.52				

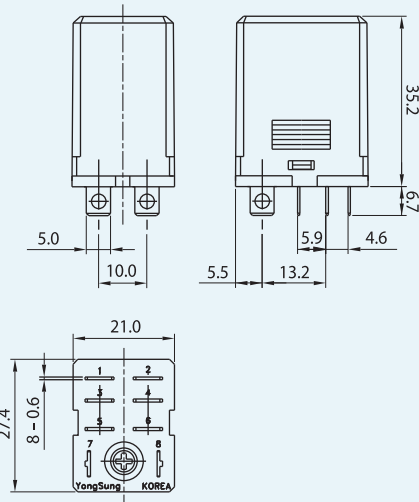
- ※ 주      1. 정격전류의 허용범위는 20℃에서 +15%, -20%입니다.  
 2. 코일저항은 허용범위는 20℃에서 ±15%입니다.  
 3. 코일특성은 20℃에서의 수치입니다.  
 4. 상기 수치는 일반형에 대한 코일정격입니다.

- ※ Note    1. Allowable range of rated current (at 20℃) : +15%, -20%.  
 2. Allowable range of coil resistance (at 20℃) : ±15%.  
 3. Coil characteristic is specified at 20℃.  
 4. Above data indicates coil resistance based on general type.

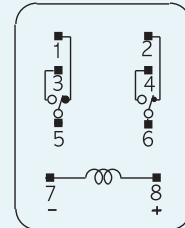
## 외형 / 치수도 | Shape / Dimension Drawing

(unit: mm)

YS LY10-2P



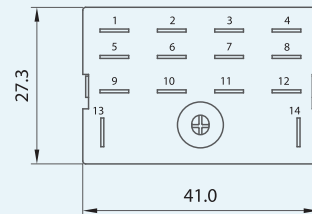
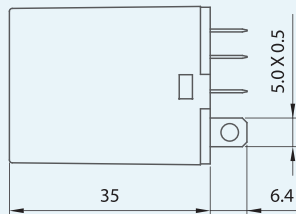
내부 결선도  
(Inside Connection Diagram)



YS LY10-2P

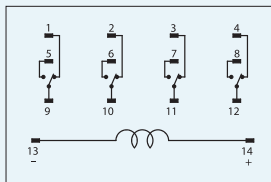
※ 적용소켓 : YS SKLY-2  
(Applied socket : YS SKLY-2)

YS LY10-4P

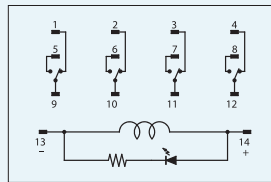


## 내부 결선도 | Inside Connection Diagram

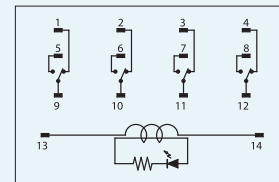
YS LY10-4P



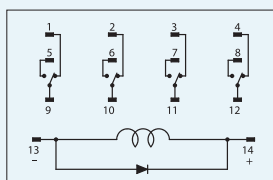
YS LY10-4P L(DC)



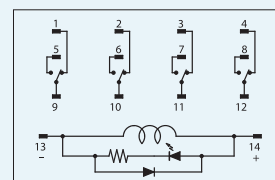
YS LY10-4P L(AC)



YS LY10-4P D(DC)



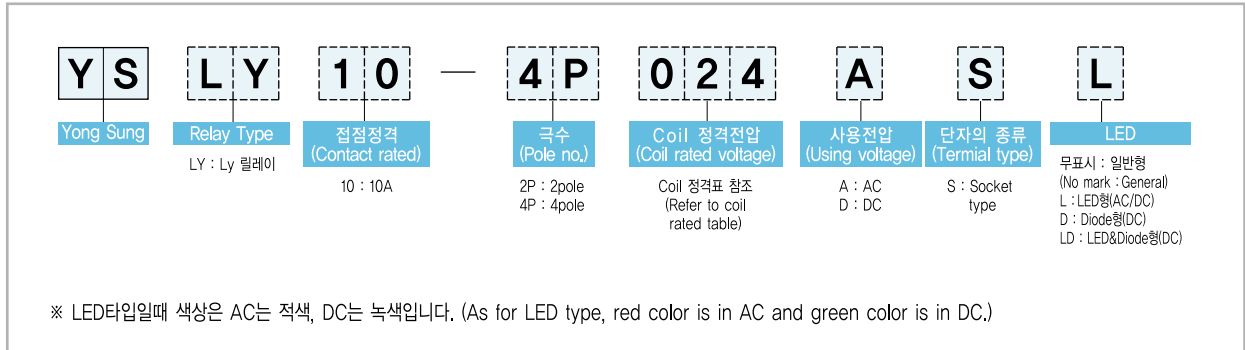
YS LY10-4P LD(DC)



릴레이



## 형식 구분도 | Type Classification Diagram |



## 특징 | Features |

- LED 내장형, 다이오드 내장형, C·R회로 외장(주문형) 등 다양한 종류의 선택이 가능합니다.
- 소형 경량이므로 복잡한 제어회로에 적용 가능합니다.
- There are various options, such as Inner mounted LED type, Inner mounted Diode type, Outer mounted C,R circuit etc.
- Light and small-sized type for applying to complicated control circuit.

## 사용시 주의사항 | Remarks in Use |

- DC용은 결선 시 극성에 유의하십시오.
- DC 정격은 완전 직류치를 표시한 것입니다.
- Double-check with polarity when wiring for DC use.
- DC rated indicates constant-direct current value.

## 성능 개요 | Performance Summary |

접촉저항 (Contact resistance)	50mΩ 이하 (초기치)	
절연저항 (Insulation resistance)	100MΩ 이상 (DC 500V Meg)	
내전압 (Withstand voltage)	접점상호간 (Between contact)	AC 1,000V/Min (50~60Hz)
	충전부와 비충전부간 (Between charging part and non-charging part)	AC 2,000V/Min (50~60Hz)
기계적수명 (Mechanical lifetime)	Above 3,000,000 times	
전기적수명 (Electrical lifetime)	Above 200,000 times	
동작시간 (Operating time)	Below 20ms	
복귀시간 (Return time)	Below 20ms	
내진동 (Withstand vibration)	10~55Hz Double amplitude 1.0mm	
최대개폐빈도 (Max. Switching frequency)	기계적 (Mechanical)	300 times/min
	전기적 (Electrical)	30 times/min
사용주위온도 (Ambient temperature)	-25℃ ~ +40℃	
상대습도 (Relative humidity)	45 ~ 85%	

릴레이