

Basic Series • Square Panel Meters

For Frequency (Double Pointer-Type Frequency Meter)



Moving-Iron Movement, 90° scale white, imprint black
Narrow front frame matt black per DIN 43718, anti-glare glass

Technical Specification	Model	
	DFP96	DFP144
Scale Length, mm	97	145
Accuracy Class	1.5%	1.5%
Approx. Weight	0.35Kg	0.50Kg
Power Consumption approx.	5mA per system	5mA per system
Max. Operating Voltage	600V	600V
Test Voltage	5.8KV	5.8KV
Front Housing -Panel Protection	IP52	IP52

Description

Analog Panel Meter with moving-coil and built-in frequency converter

Displays

Scale Division Coarse-fine
 Pointer Knife Edge Beam Pointer per-DIN

Mechanical Design

Housing materials Polycarbonate, self-extinguish and drip-proof per UL94V-0
 Mounting Fasteners Screw Clamp
 Scale Interchangeable scales Scales can only be replaced under voltage-free conditions!
 Replaceable Front frames . glass windows and scale plate Scales may only be replaced under voltage-free conditions
 Terminals Self-lifting terminal. Screws can be turned with a cross-head or standard screw driver
 Contact Protection Finger-safe terminal

Available Input Voltages

Connection	Input Voltages	
Direct Connected	Voltage	10V ... 600Vac
Transformer Connected	Voltage	sec.: 110V, 220V, 230Vac

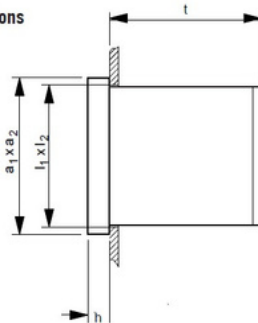
Available Frequency Range

Frequency Range	45...50...55Hz 55...60...65Hz
-----------------	----------------------------------

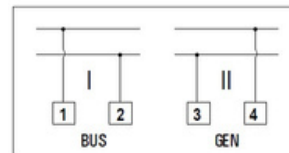
Reference Conditions

Reference Quantities	Reference Conditions
Ambient Temperature	23°C ± 2°C
Position of Use	Control Panel Vertical ± 1°
Input Voltage	Rated Value of Voltage
Waveshape	Sine
Warm-Up Time	≥ 5 min.
Other	DIN EN 60051

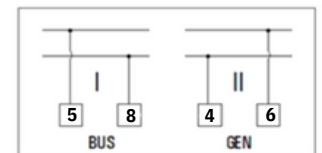
Basic Dimensions



Connection Diagram



DFP 96



DFP 144

Model	Front in mm a1 x a2	Cutout Dimensions, mm l1 x l2	Installation Depth (t), mm
DFP 96	96 x 96	93 x 93	65
DFP 144	144 x 144	138 x 138	60