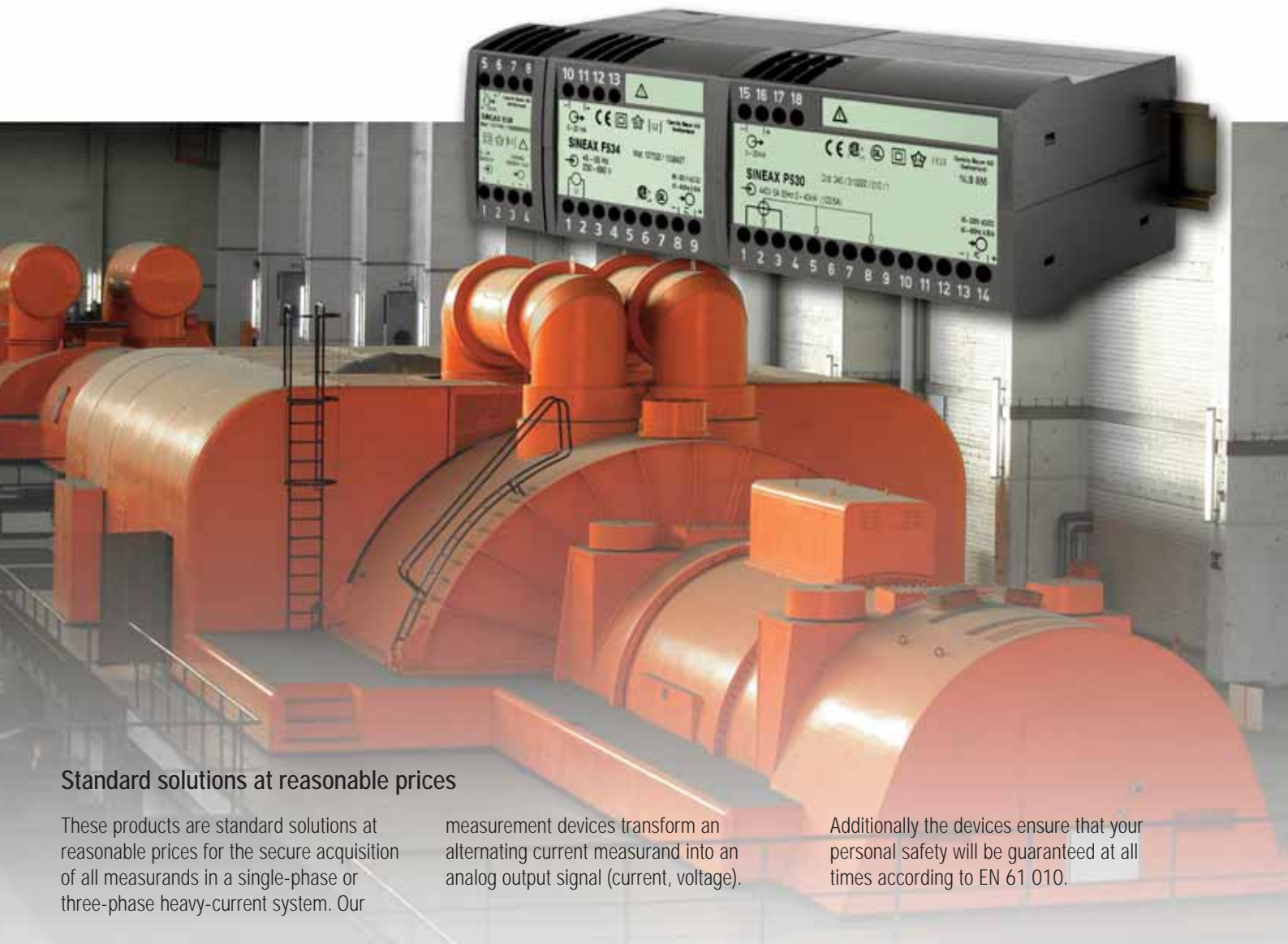




Measuring transducers
for heavy-current measurands

SINEAX

From conventional transducers...



Standard solutions at reasonable prices

These products are standard solutions at reasonable prices for the secure acquisition of all measurands in a single-phase or three-phase heavy-current system. Our

measurement devices transform an alternating current measurand into an analog output signal (current, voltage).

Additionally the devices ensure that your personal safety will be guaranteed at all times according to EN 61 010.

Type	Measurands	Output signals	Special features	Power system	Housing width
I542	AC current	U, I	Self-powered	Single-phase	35 mm
I538	AC current	U, I	With power supply or 2-wire	Single-phase	35 mm
I552	AC current	U, I	RMS value measurement	Single-phase	70 mm
U543	AC voltage	U, I	Self-powered	Single-phase	35 mm
U539	AC voltage	U, I	With power supply or 2-wire	Single-phase	35 mm
U553	AC voltage	U, I	RMS value measurement	Single-phase	70 mm
U554	AC voltage	U, I	Diff. characteristics/RMS value measurement	Single-phase	70 mm
P530	Active power	U, I		Single-phase, 3-/4-phase balanced or unbalanced	105 mm
Q531	Reactive power	U, I		Single-phase, 3-/4-phase balanced or unbalanced	105 mm
F534	Frequency	U, I		L – 0 or L – L	70 mm
F535	Frequency difference	U, I		U1 – U2	70 mm
G536	Phase angle	U, I	cos φ or φ proportional	Single-phase, 3-/4-phase balanced	70 mm
G537	Phase angle difference	U, I	cos φ or φ proportional	U1 – U2	70 mm
M563	P, Q, S, I \sim , U \sim , cos φ (PF), sin φ (QF), LF, f	U, I	Configurable, 3 electrical isolated outputs	Single-phase, 3-/4-phase balanced or unbalanced	105 mm

SINEAX

...up to multi-functional measurement devices



Multi-talents strong in communication

The products of the DME4 series are multi-talents and strong in communication. They measure all standard measurands in a power system at the same time and may communicate them to the operator or control system in many different ways.

The devices of the DME4 series acquire up to 43 present measurands (class 0.2) and additionally are able to monitor your energy consumption by means of standard built-in

meters for active or reactive energy (class 1 resp. class 2)

The device versions DME 407 and DME 408 are suitable for energy management in 3-phase systems. They provide energy consumption and billing data (load profiles, meters). By means of remote acquisition of the measurands via ethernet these data are recorded, visualized or possibly archived in the control system.

Additionally the devices ensure that your personal safety will be guaranteed at all times according to EN 61 010.

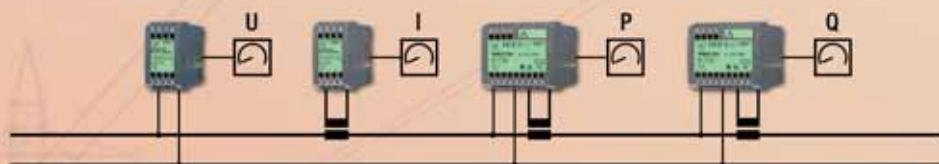
Type	Measurands	Output signals		Configuration/ A200-interface	Communication interface	Transmission protocol
		analog	digital			
DME 424		2	4	RS 232	—	—
DME 442	P, Q, S,	4	2	RS 232	—	—
DME 440	I~, U~,	4	—	RS 232	RS 485	Modbus
DME 401	cos φ (PF),	—	—	RS 232	RS 485	Modbus
DME 400	sin φ (QF),	—	—	RS 232	LON FTT-10A	LonTalk
DME 406	LF,	—	—	RS 232	RS 485	Profibus DP
DME 407	f	—	—	RS 232	Ethernet	Modbus over TCP/IP
DME 408		—	—	RS 232	Ethernet	Modbus over TCP/IP, FTP, HTTP, SMTP



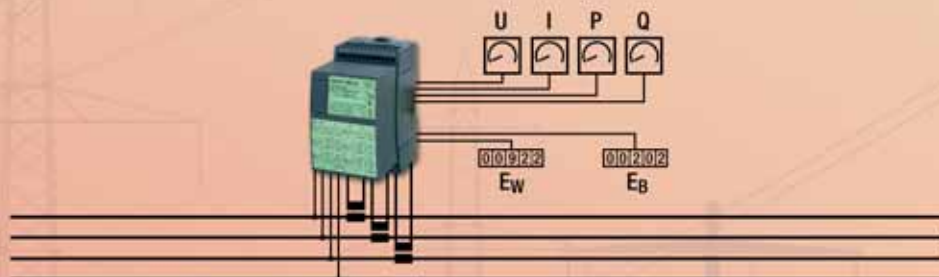
SINEAX

We offer solutions for all requirements

Conventional



Multi-functional



Multi-functional
and
strong in communication



 **CAMILLE BAUER**

Camille Bauer Ltd
Aargauerstrasse 7
CH-5610 Wohlen / Switzerland
Phone: +41 56 618 21 11
Fax: +41 56 618 24 58
e-Mail: info@camillebauer.com
www.camillebauer.com